



**BRIGHTSUN**  
MARINE PTE LTD

Established in 1998 at Singapore



**SHIP REPAIR MADE SIMPLE**

## QUALITY & SAFETY

ISO 9001:2015 & ISO 45001:2018 certified by  
SOCOTEC Certification International

Brightsun follows best practices in the  
Industry and strive to exceed customer's  
expectation

Culture of continuous improvement, Use data  
to drive decision-making, streamlined  
processing & Foster a safety culture

## OUR VISION

To be a Pioneer in the Marine  
Services sector globally  
To offer Safe and Reliable  
Ship repair services

## INNOVATION

Technology Advancement  
Customer focus  
Quality  
Talent development  
Environmental sustainability

## BRIGHT PROSPECTS .....

Brightsun has a well qualified and experienced team  
Grown from 5 persons team in 1998 to 600+ persons team  
Innovate to excel, people centric, collaborate for success  
Empowering possibilities, Build to last, Delivering excellence  
Innovation with a purpose, having Safety Culture as a paramount practice







We are authorized by .....

 **Mitsui E&S DU Co., Ltd.**

 **HANSHIN DIESEL**

 **J-ENG**  
Japan Engine Corporation

 **AKASAKA Diesels Limited.**

 **NAKASHIMA**

 **NIKURA KOGYO CO.,LTD.**

 **MAKITA CORPORATION**

 **TEIKOKU**  
MACHINERY WORKS,LTD.

**SEMCO**

Service Partner of .....

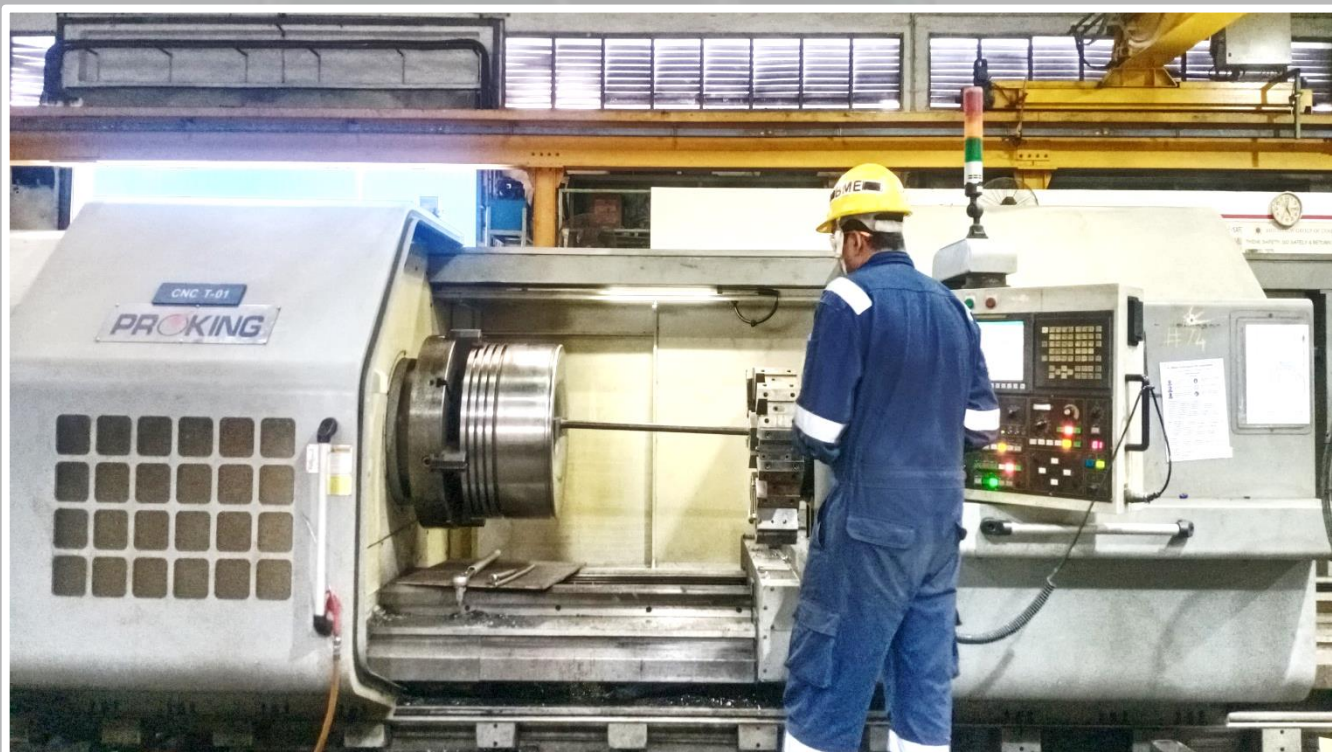
 **HD** **HYUNDAI**  
**MARINE SOLUTION TECH**





## ENGINE COMPONENTS RECONDITIONING

State of the Art facilities to carry out Full & Partial Reconditioning of 2 Stroke Piston Crown, Cylinder Cover, Piston Rod, Exhaust Valve Spindle/Seat, Piston Skirt and Exhaust Valve Housing etc. for models B&W, SULZER and UEC as well as 4 Stroke Piston Head & Cylinder Head etc. for models YANMAR, DAIHATSU, B&W, WARTSILA, CATERPILLAR and CUMMINS.

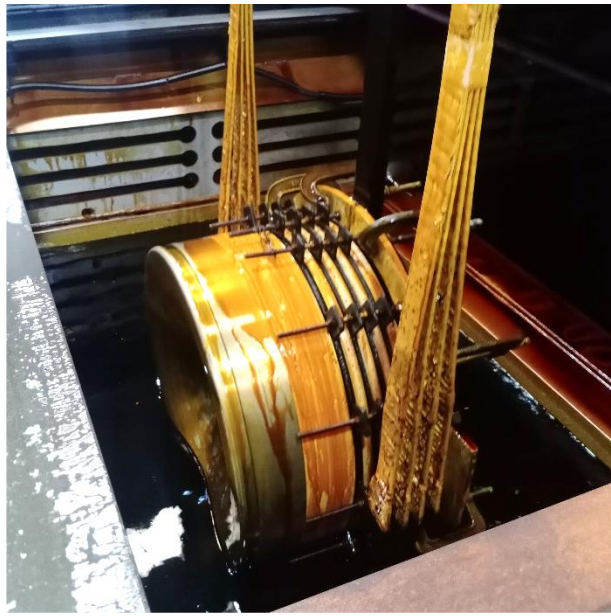


## CNC MACHINING OF PISTON CROWN





**CNC FINAL MACHINING OF CYLINDER COVER**



**HARD CHROME  
PLATING OF PISTON RING GROOVES**



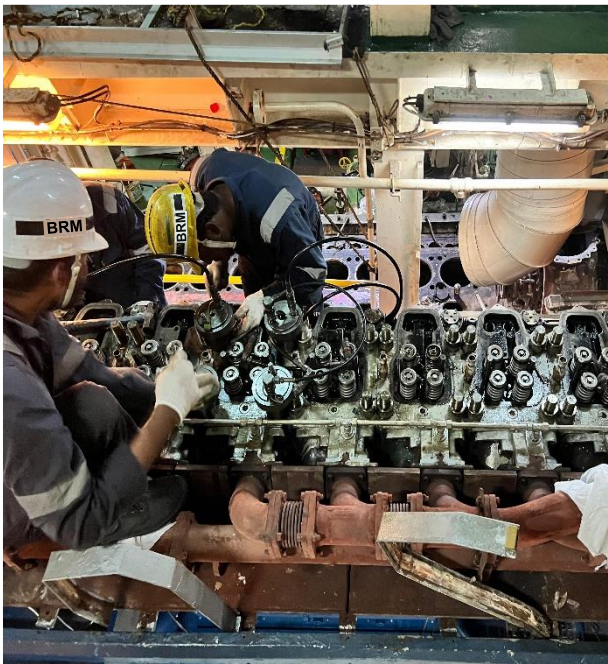
**AUTOMATED SAW  
WELDING OF CYLINDER COVER**



## MAIN & AUXILIARY ENGINE OVERHAULING



## 2 – STROKE ENGINE OVERHAULING



## 4 – STROKE ENGINE OVERHAULING





## MARINE MECHANICAL SERVICES

- ❖ Overhauling of Engine room & Deck machineries
- ❖ In-situ renewal of seals, spares & accessories
- ❖ Laser alignment of static & rotating equipment's
- ❖ Overhauling of Gear box & Hydraulic machinery
- ❖ Trouble shooting of PV valves c/w Test bench facilities
- ❖ Remove, Overhaul & Refit CP propeller, FP propeller & thrusters
- ❖ Repairing of Rudder, Kort Nozzle & Stabilizer



**THRUSTER OVERHAULING**



**GRAB OVERHAULING**





## MARINE ELECTRICAL & AUTOMATION SERVICES

- ❖ Rewinding & Overhauling of Electrical motors
- ❖ Certified test kit for Switch board calibration
- ❖ Tank gauging & Cargo control systems
- ❖ High Pressure / Chemical washing
- ❖ Measuring / Monitoring equipment's calibration
- ❖ In-Situ Chemical cleaning of panels, motors & generators
- ❖ Function test & Load test



## ELECTRICAL MOTOR SERVICES





**ELECTRICAL MOTOR  
HEALTH ANALYSIS**



**IN-SITU CHEMICAL CLEANING  
OF ALTERNATOR**



**REWINDING OF  
ELECTRICAL MOTORS**

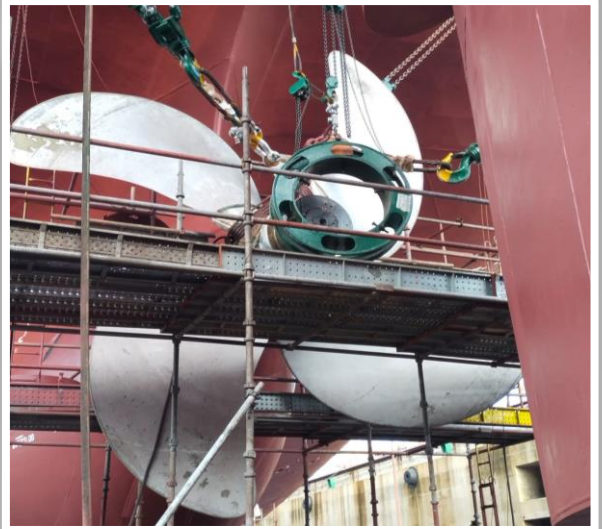


**ELECTRICAL INSTRUMENTS  
TESTING LAB**





**HEAVY LIFTING OPERATION**



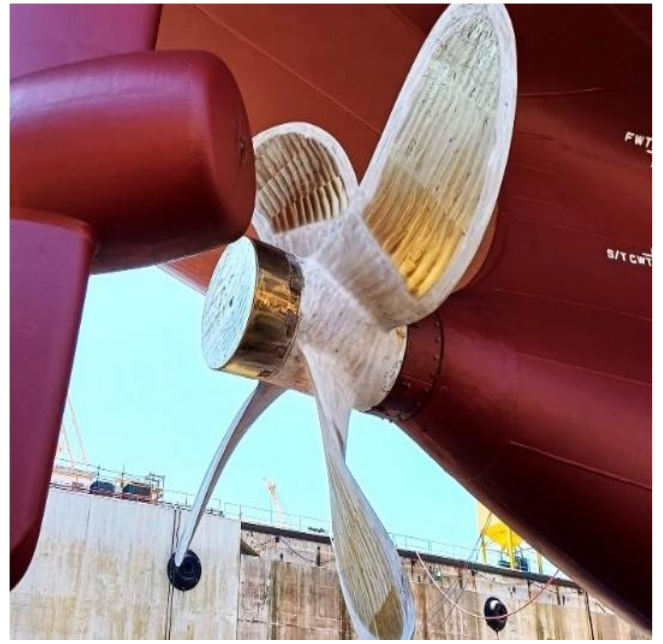
**PROPELLER INSTALLATION**

**ALL TYPE OF COOLER AND CONDENSER SERVICES**





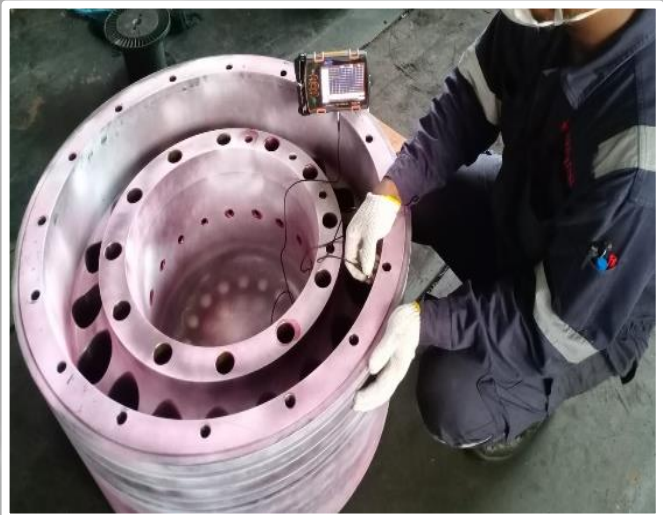
## PROPELLER POLISHING



## SPECIALIZED SERVICES



**DYNAMIC BALANCING**



**NDT - ULTRASONIC TEST**



**INFRARED THERMOGRAPH**



**LASER ALIGNMENT**

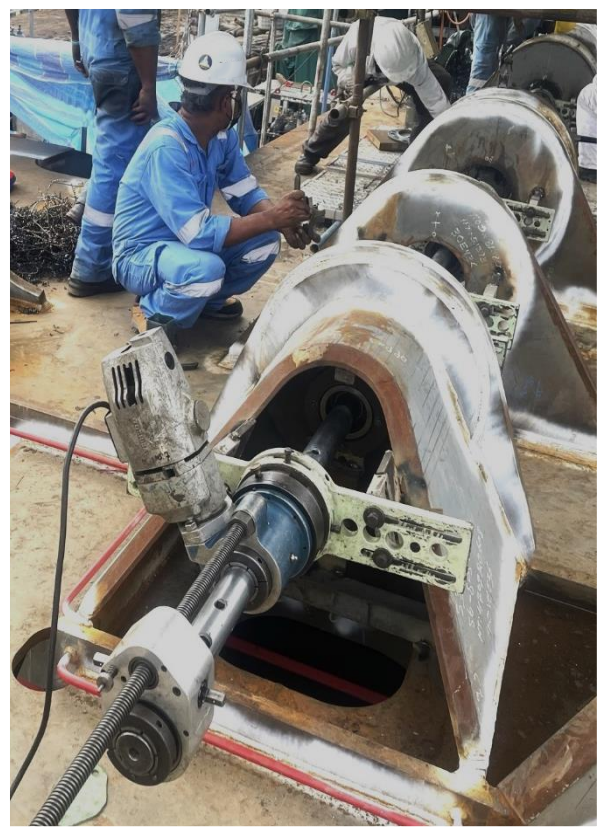




**MACHINE SHOP & IN-SITU MACHINING SERVICES**



**IN-SITU CRANE PEDESTAL  
FLANGE MACHINING**



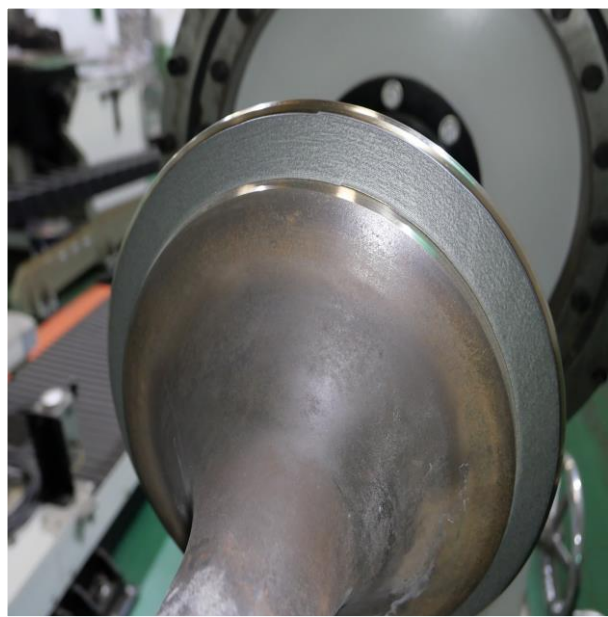
**IN-SITU LINE BORING**



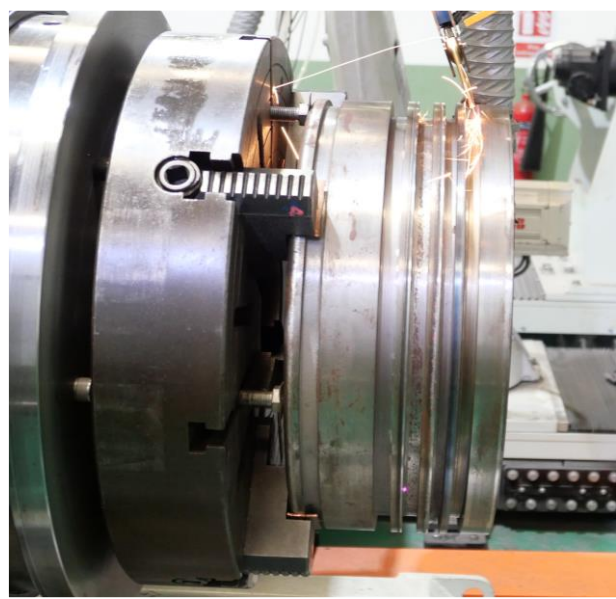
## ROBOTIC LASER CLADDING SERVICES



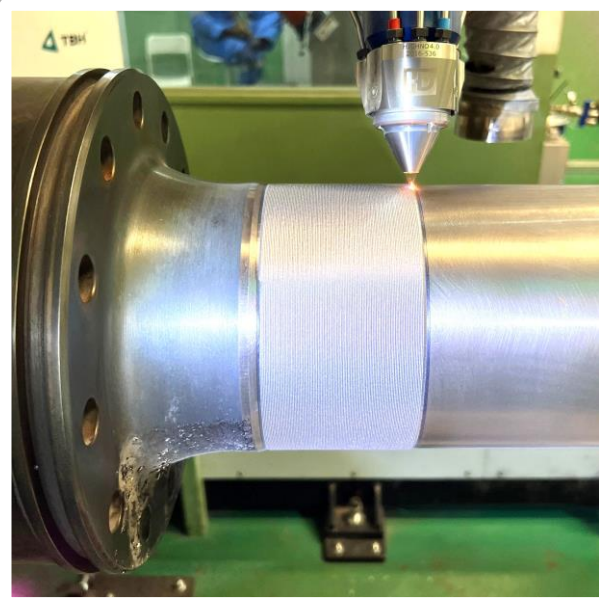
**CLADDING OF AUX.ENG CYL HEAD  
VALVE SEAT POCKET**



**CLADDING OF EX.VALVE SPINDLE  
LID SURFACE**



**CLADDING OF PISTON RING  
GROOVES**



**CLADDING OF PISTON ROD**



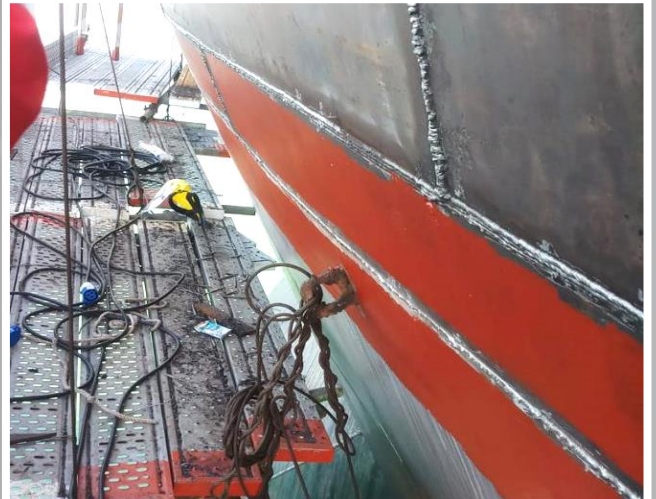
## PIPING SERVICES



EGCS Scrubber Overboard Pipe Repair, Exhaust Gas Bellow and Pipe Renewal Works, Engine Room system Pipes, Ballast Water Pipes, Carbon Steel Overboard Pipe Renewal Using cofferdam by divers, Pipe Modification and Repair For all ship systems, Installation of New Pipeline, Flow Meter Installation, Copper Nickel Pipe Fabrication and Installation, Stainless Steel Pipe Fabrication and Installation, Fabrication/Repair of Manifold Reducer, Pickling of hydraulic pipe lines, flushing of system and pressure test.



## STEEL WORK SERVICES



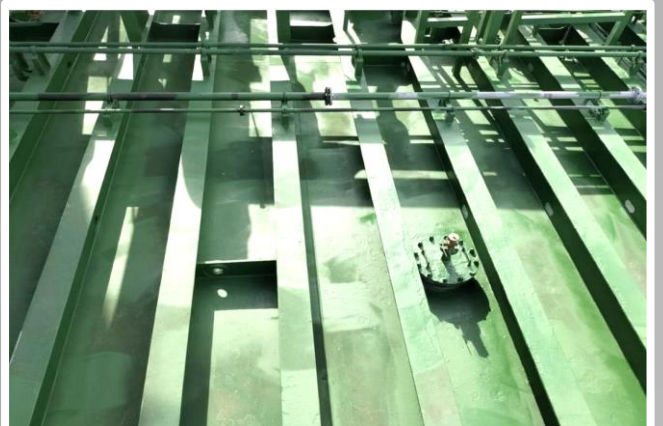
Afloat and On-Voyage Repairs, Contact Damage and Collision Repairs, Side shell plate renewal, Bow repairs, Bulwark renewal, Crane Jib Steel Repair, Cell Guide Repairs, Anchor and Anchor Chain Installation using Flat Top Barge, Sea Fastening Works, Aluminum Gangway and Accommodation Ladder Repairs, Anti-Piracy Arrangement Installation, Mooring fittings installation, Hatch cover repairs and Hydro test.



## HYDRAULIC SERVICES



## BLASTING & PAINTING



## UNDERWATER DIVING SERVICES





## REPAIR OF AIR-CON & REFRIGERATION SYSTEM



## EVAPORATOR CHEMICAL AND TANK CLEANING

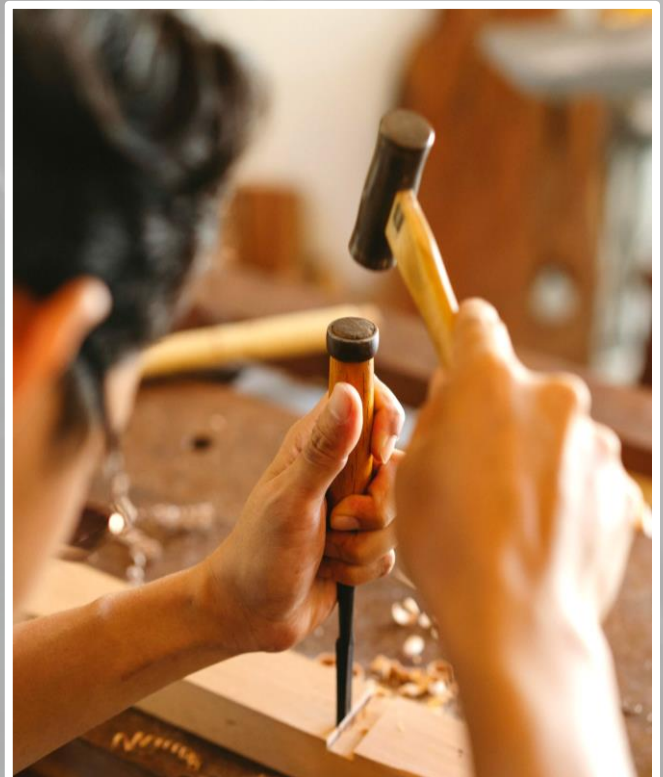




## AFLOAT RIGGING AND TESTING SOLUTION

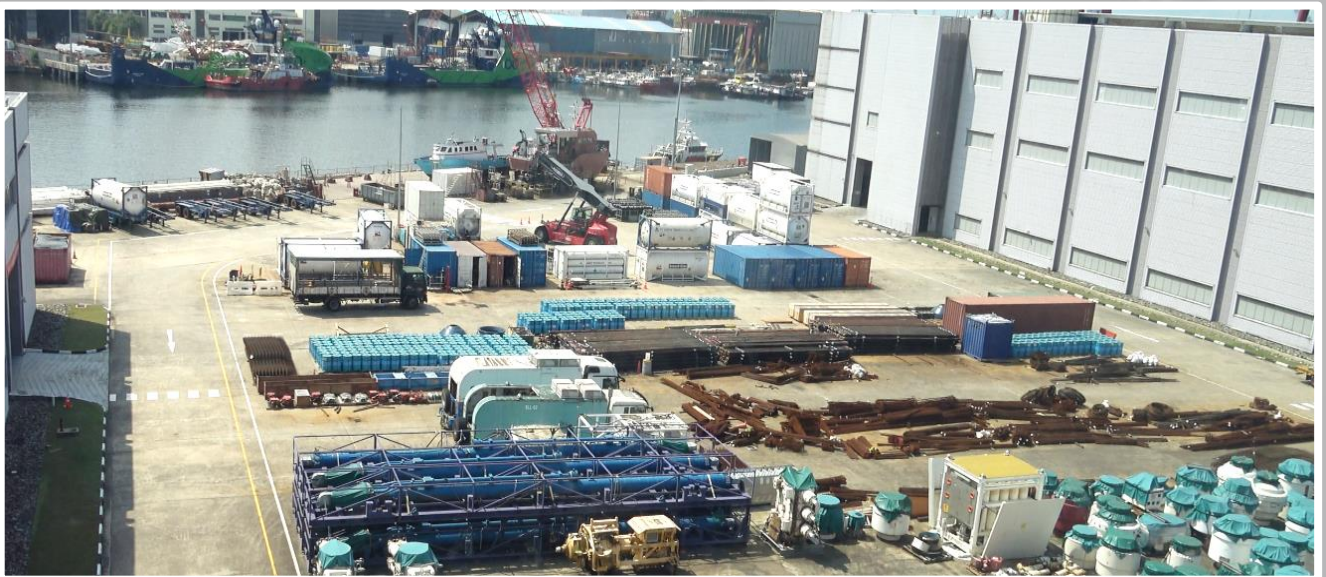


## CARPENTRY





## WATERFRONT WITH BERTH SIZE 150M LONG AND 5.4M DRAFT



## ACCOMMODATION SERVICES

- ❖ Supply of tempered glass and glass renewal works.
- ❖ Plumbing works - Ship fresh water system and toilet repair.
- ❖ Accommodation PVC pipe renewal works.
- ❖ Paneling – Walls, partitions and bulkheads - lightweight, decorative, acoustic, wet area, safety and fire rated.
- ❖ Ceiling - lightweight, acoustic and fire rated
- ❖ Flooring – Marine and fire rated screeds, A60 deck and cassette systems, access flooring, decorative epoxy, vinyl and rubber, ceramic tiles, carpet and anti-slip safety flooring.
- ❖ Doors - Internal and external, fire rated.
- ❖ Windows – Internal and external, fire rated hatches.
- ❖ Fabrication and installation of furniture.
- ❖ Wet Units – Prefabricated, fully fitted modular wet units and bathrooms.
- ❖ Locker Room - Furniture and equipment.
- ❖ Soft Furnishings, Black out blinds and Curtains.



### We are Able to Serve in these Countries

- Singapore
- Malaysia
- Indonesia
- Thailand
- Taiwan
- Turkey
- China
- India
- UAE
- Brunei
- Belgium
- Netherlands
- Australia
- Japan
- South Korea
- Philippines

### Our Overseas Agent Network

- Indonesia
- Malaysia
- Thailand
- Taiwan
- Turkey
- China
- India
- Vietnam
- Netherlands
- Belgium
- Germany
- Greece
- Cyprus
- South Korea
- United Kingdom
- Ireland
- UAE
- Norway
- Bahrain
- Oman
- Philippines



### Head Office & Workshop

#### Brightsun Marine Pte Ltd

- 📍 9 Tuas Ave 8, Singapore 639224
- ☎ +65 6863 4001
- ✉ sales@brightsun.com.sg
- 🌐 www.brightsun.com.sg

#### PT. Brightsun Marinindo Perkasa

- 📍 Bintang Industry II Area, LOT H4 No.1 & 2, Jl. Bridgend katomso Tanjung Uncang, Dist. Batu Aji Batam City Postal Code 29424.
- ☎ +62 813-2530-5611
- ✉ sales@brightsunmarinindo.com

