

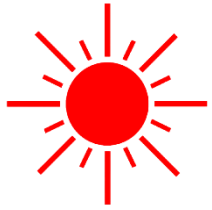
 **BRIGHTSUN**

MARINE PTE LTD



BRIGHTSUN MARINE PTE LTD

NO 9 TUAS AVE SINGAPORE 639224



BRIGHTSUN GROUP OF COMPANIES

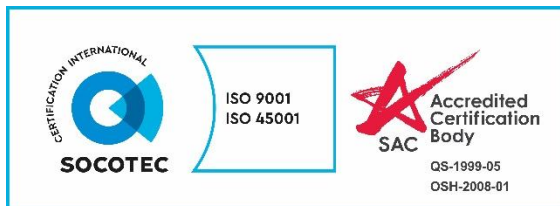
BRIGHTSUN MARINE PTE LTD

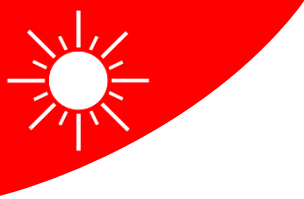
BRIGHTSUN ENGINEERING PTE LTD

BRIGHTSUN ELECTRICALS PTE LTD

BS E&I SERVICE PTE LTD

MARS MARINE SERVICE PTE LTD





VISION

To be a Pioneer in Marine and Offshore Engineering in the Asia Pacific Region

MISSION

Deliver Safe & Quality Service to our Customers

Provide optimum returns to our shareholders

Create a healthy and conducive work environment for our employees

Maintain our reputation as a responsible corporate citizen



OVERVIEW OF BRIGHTSUN MARINE

- * Promoted by a team of dynamic technical professionals.
- * Core business in the Marine Services Industry since 1998, Planning to Venture into Construction & Process Industry.
- * Ship repairing and refurbishments are the main activities, Planning to utilize our Expertise in Construction, Process sector & allied Industries.
- * Resident contractor to major Shipyards in Singapore, also have the Common Contractor manpower set up.
- * Afloat & Anchorage repairs, In-situ Machining, Laser Cladding & Laser Alignment.
- * Well equipped Overhauling, Machining and Fabrication facilities under one roof covering 60,000 sq/ft area located at Tuas.



Mr. R. Gunasekaran - Managing Director

- * Dynamic founder of Brightsun Group
- * 40 years of experience in the Marine Industry
- * Possess immense foresight, acumen and entrepreneurial spirit

Mr. R. Anbalagan – Director

- * Heads Production Planning & Control
- * 38 years of experience in the Marine industry

Mr. R. Vijayanand – Director

- * Heads Shipyard Operations, HSE, QA & AC
- * 34 years of experience in the Marine industry



Mr. R. Anand – Director

- * Heads Marketing & Sales, comes with Shipyard & Ship Management experience
- * 34 years of experience in Ship building & Ship repair industries Globally

Mr. K. Madhu kumar – Director

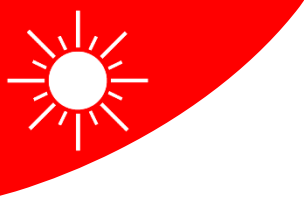
- * Heads E&I dvn, Graduated with a Master's degree in Project Management
- * 18 years of experience in Marine, Offshore, Construction & Process sector industries

Mr. Yukinori Sakai – Vice President

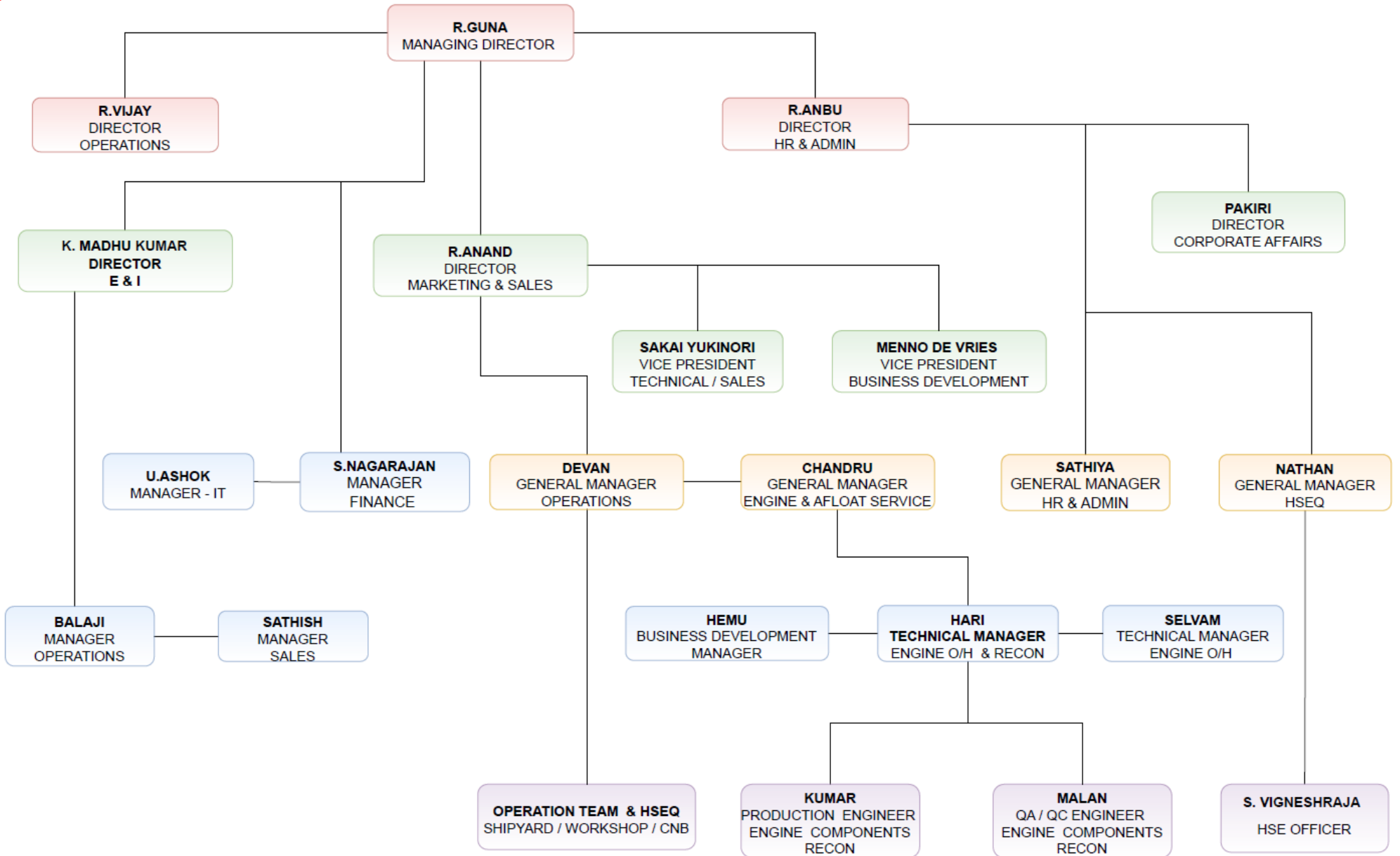
- * Heads Technical & Cooperation with Manufacturers of Marine Engines & allied Equipment's
- * 48 years of experience in various Maritime & Railway Industries at senior Management level

Mr. Menno de Vries – Vice President

- * Heads Business Development dvn along with Networking activities among worldwide Agencies
- * 55 Years of experience in various Maritime & Aviation industries at senior Management level



BRIGHTSUN MARINE PTE LTD - ORGANISATION CHART





SHIP REPAIR SERVICES - Includes voyage & anchorage repairs



MECHANICAL SERVICES



POLISHING OF PROPELLER



ELECTRICAL SERVICES



INSTRUMENTATION AND CONTROL SYSTEMS



OVERHAULING OF MAIN ENGINE



PIPE TUBING RENEWAL



STRUCTURAL STEEL RENEWAL



MACHINING WORK



LASER ALIGNMENT



SHIP REPAIR SERVICES - Includes voyage & anchorage repairs



PROPULSION WORK



WINDLASS OVERHAUL



PIPE FABRICATION



CLADDING OF PISTON RING GROOVE



IN-SITU CHEMICAL CLEANING OF ALTERNATOR



ENGINE BLOCK RENEWAL



RECONDITIONING OF CYLINDER COVER



CNC MACHINING WORK



SKID FABRICATION



IN-SITU BORING WORK



MOTOR HEALTH ANALYSIS



GRAB REPAIR



COMPETITIVE ADVANTAGE

- * Comprehensive Range of Repair Services
- * Service Contractor to Major Shipyards
- * Servicing all Brands and Makes of Equipment & Machinery
- * Well equipped workshop and fabrication facilities
- * Experienced Technical Team
- * Ample Logistics support
- * Services available 24x7
- * Connectivity to Spares & Raw Materials
- * Riding Crew for Engine Overhauling work



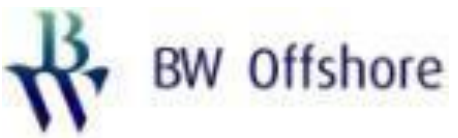
SHIPYARD CLIENTELE



PREFERRED CONTRACTORS TO

1. SEATRIUM (BOULEVARD YARD)
2. SEATRIUM (PIONEER YARD)
3. SEATRIUM (BENOI YARD)
4. SEATRIUM (ADMIRALTY YARD)
5. ST ENGINEERING MARINE (BENOI)
6. ST ENGINEERING MARINE (TUAS)
7. CHANGI NAVAL BASE
8. PSA – TUAS , GUL & BRANI BASE
9. BOSKALIS INTERNATIONAL
10. PAXOCEAN SHIPYARD
11. PACIFIC RADIANCE SHIPYARD
12. MOOREAST SHIPYARD

CLIENTELE



CLIENTELE



Reederei Schepers
Haren/Ems



REEDEREI F. LAEISZ



Green Wave
Shipping LLC

جرين ويف
للملاحة ش.ذ.م.م



PT SHIPMANAGEMENT



CHINA NAVIGATION



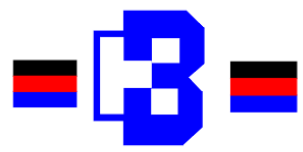
The Sanmar Group
Where Integrity Meets Excellence



REEDEREI NORD GROUP



Peter Döhle
Schiffahrts-KG



HARTMANN REEDEREI
SETTING THE RIGHT COURSE



WORKSHOP FACILITIES

Our workshop located in No 9, Tuas Avenue 8, is equipped with a wide range of facilities under one roof spread over an area of 60,000 sq/ft

- * Hard Chrome Coating Tanks
- * 3, 5, 10 and 20 ton capacity Overhead & Gantry crane
- * CNC Vertical Lathe Machine with Chuck Dia 2.2 mtr & 1.6 mtr
- * CNC Horizontal Lathe Machine with Chuck Dia 650 mm x 4 Mtr
- * Conventional Lathe Machines & Radial Drilling Machines
- * Universal Milling Machines & Boring Machines
- * Dynamic Balancing Machine
- * Electronics / Automation Laboratory
- * Hydraulic Press machine with power pack setup
- * Automated PTA , SAW & FCAW Welding Set with Tilt table
- * High Pressure Cleaning and Washing Bay
- * Ovens for Heating & Annealing Work with Temp Range to 650° C
- * Robotic Laser Cladding Facilities
- * In-house Training Centre







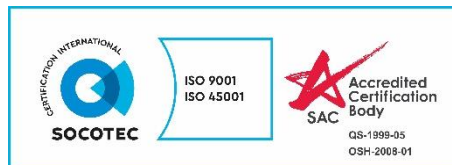
HUMAN CAPITAL

- * Brightsun has a well qualified and experienced team.
- * Grown from 5 persons team in 1998 to 555 persons Team till today.
- * Recognizing, nurturing and retaining talent.
- * We provide continuous skills upgrade and training to employees.
- * Work Philosophy involves Multi-Trade & Multi-Skilled activities
- * Safety conscious and commitment to work



SAFETY

- * Brightsun has a strict Safety Policy
- * **BizSafe Star Level** accredited by WSHC
- * **BizSafe Enterprise Exemplary Award in 2016** from WSHC
- * **BizSafe Champion Award in 2016** from WSHC
- * BS OSHAS Certified ISO 45001:2018 by SOCOTEC Certification International
- * Qualified General Manager for Safety c/w Safety Coordinators





QUALITY

- * ISO 9001 : 2015 certified by SOCOTEC Certification International
- * Brightsun follows best practices in the industry and strive to exceed customer's expectation
- * Continuous process improvement for quality service delivery





MASS SAFETY BRIEFING IN THE CLIENT PREMISES





IN-HOUSE SAFETY ORIENTATION PROGRAM & TRAINING





BizSAFE ENTERPRISE EXEMPLARY AWARD AND CHAMPION AWARD FOR 2016 PRESENTED BY WSHC





MAIN ENGINE & AUX ENGINE OVERHAULING

- * Team can carry out ME Type Electronic Engine works related to Overhauling of Exhaust actuator, Fuel oil Booster, Gas Injection Valve, Starting Valve, Window Valve, Gas Control Block complete with FIVA, ELFI & HPS overhauls
- * Service Engineers & Engine Fitters to carry out complete overhauling at Port, Anchorage & Voyage
- * Technical Expertise to handle models comprising MAN B&W, WARTSILA / WIN GD, MITSUBISHI, HYUNDAI, DOOSAN, STX, MTU, YANMAR, CUMMINS, DAIHATSU, CATERPILLAR etc
- * We also offer assistance to overhaul and calibrate related components like Fuel Pumps, Turbocharger, Governor etc

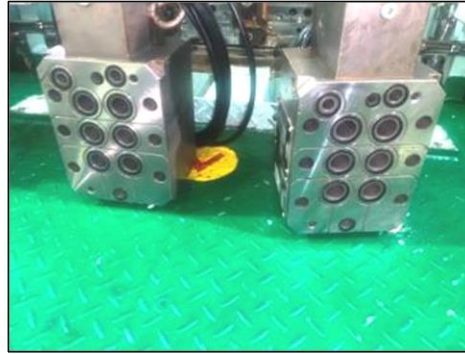


ME ENGINE – FIVA, ELFI & HPS OVERHAULS

Booster Pump



ELFI Valve



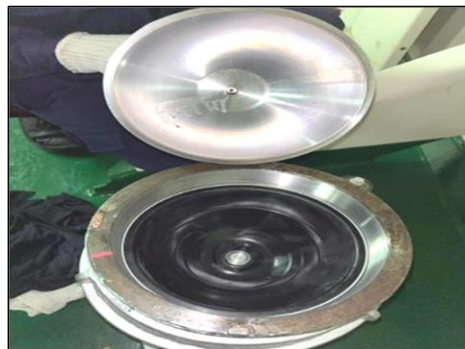
HPS Pump



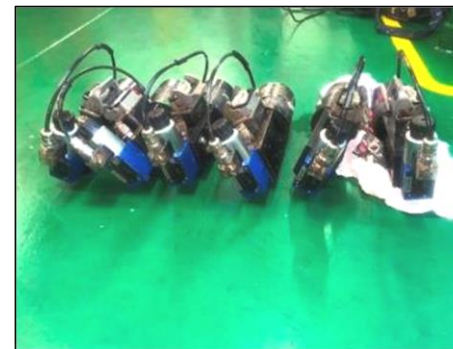
Exhaust Valve Actuator



HPS Accumulator



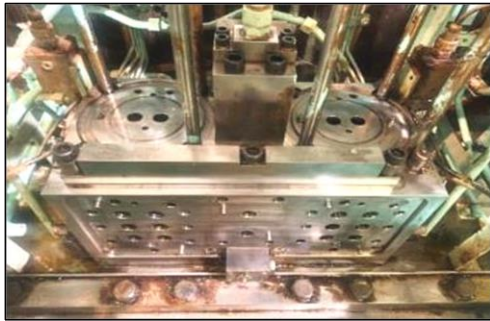
Cylinder Lubricator





ME ENGINE – FIVA, ELFI & HPS OVERHAULS

HCU Block



Starting Air Distributor



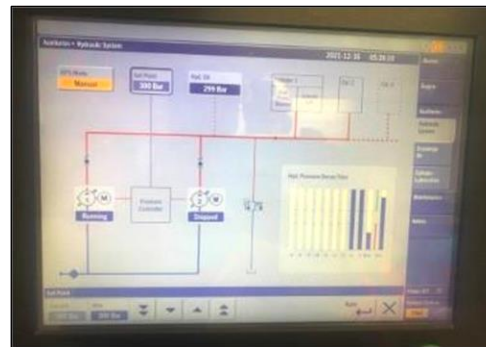
Main Chain Drive



Tacho System Inspection



ELFI Valve Inspection



HCU Performance Inspection



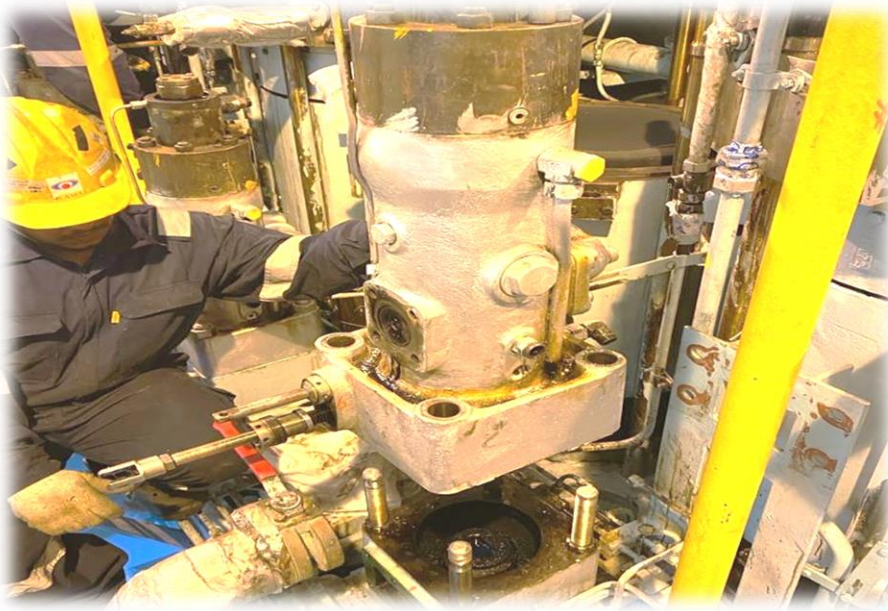


ENGINE OVERHAULING





ENGINE OVERHAULING.....Contd



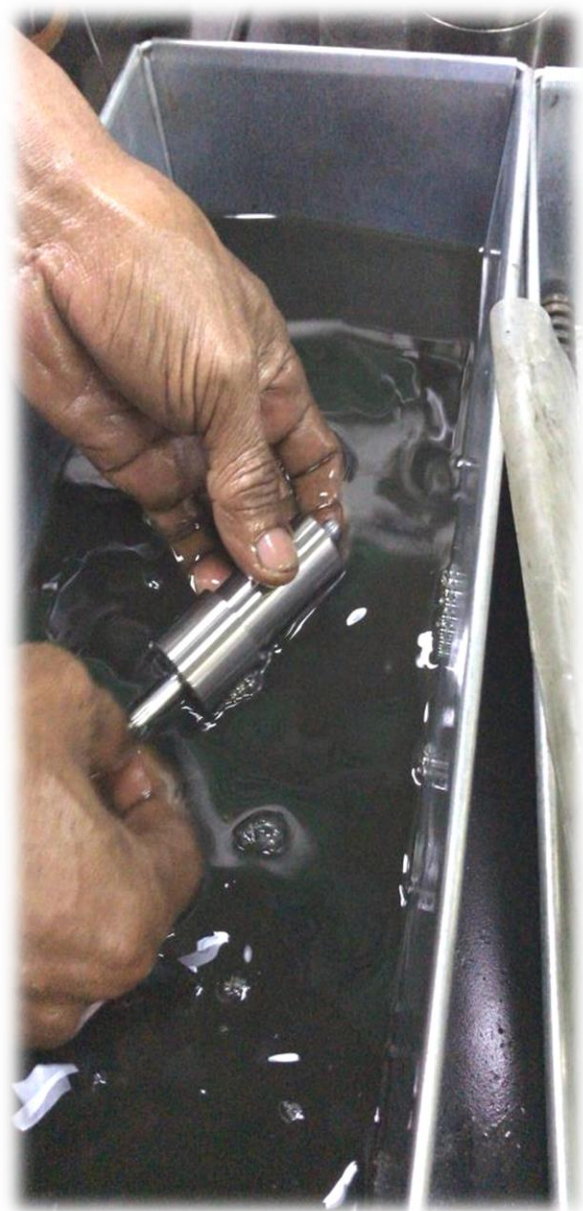


MAINTENANCE OF FUEL INJECTION VALVES

- * M/E & A/E Fuel Pump & Nozzles Overhauling
- * Fuel Injection Valve Setting
- * Renewal of Plunger & Barrel
- * Spindle Guide , Suction Valve & N/R Valve Overhauling
- * Puncture v/v , Safety v/v & Relief v/v Overhauling
- * Cylinder Lubricating Oil Sip v/v Overhauling
- * Pressure Testing of Nozzles
- * Calibration Reports



MAINTENANCE OF FUEL INJECTION VALVES





ENGINE COMPONENT RECONDITIONING

- * Reconditioning and repairing of cylinder covers, piston crown, piston skirt, exhaust valve spindle, exhaust valve seat, exhaust valve housing and other marine engine components
- * Chrome plating of piston crown ring grooves and exhaust valve spindle stem
- * Robotic Laser Cladding of Piston ring grooves and Piston rod
- * Inconel Cladding and PTA Welding of engine components
- * HVOF Spraying of exhaust valve spindle stem and piston rod
- * Defric Coating of auxiliary engine piston crowns
- * Annealing services for all components
- * Class Survey with approved WPS & PQR

Mitsui E&S DU Co., Ltd.

Mitsui E&S Group

Parts Sales Department
5292, AIOI, AIOI-SHI, HYOGO-KEN, 678-0041, JAPAN
Tel: + 81 791 24 2285 Fax: +81 791 22 6064

No.: CS2L24-003
Issue Date: 1st January 2024
Expiry Date: 31st December 2026

Certificate

This is to certify that under mentioned companies have been authorized as repair agent for diesel engine components for DU-WIN GD Diesel Engines.

Authorized company:

BRIGHTSUN MARINE PTE LTD (SINGAPORE)

Approved reconditioning and/or welding repair are

- (1) Piston crown
- (2) Cylinder cover
- (3) Piston rod
- (4) Exhaust valve casing and seat

For DU-WIN GD Diesel Engines *1

*1: Including the engines built by IHI Power Systems Co., Ltd.,
Diesel United, Ltd., Ishikawajima-Harima Heavy Industries Co., Ltd.,
Sumitomo Heavy Industries, Ltd. and NKK CORPORATION.

Mitsui E&S DU Co., Ltd.



Akio Enomoto
General Manager,
Parts Sales Department

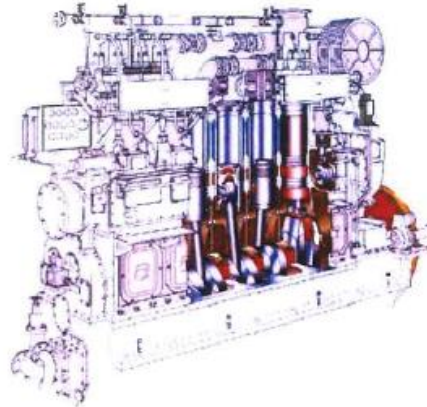
 THE HANSHIN DIESEL WORKS, LTD.

CERTIFICATE

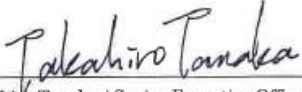
This is to certify that

BRIGHTSUN MARINE PTE LTD

has been appointed authorized Service Station in Singapore for after-sales service works such as repair, maintenance and recondition of HANSHIN 4-stroke engines and HANSHIN-KAWASAKI MAN B&W 2-stroke engines.



This certificate is valid until the end of December 2025.

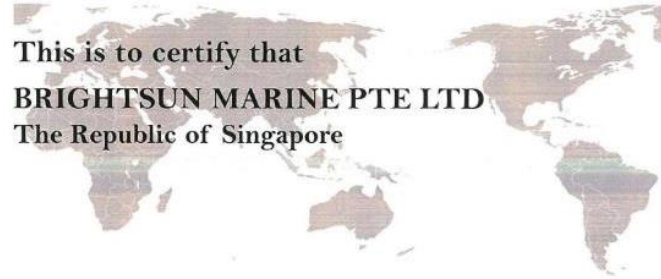

Takahiro Tanaka / Senior Executive Officer
Technology Division
Responsible for Design and Service
1st July 2023



APPROVAL FROM ENGINE MANUFACTURER'S

Reference No. : HGS-YG01-SNC20YGD01-0011

HYUNDAI GLOBAL SERVICE



This is to certify that
BRIGHTSUN MARINE PTE LTD
The Republic of Singapore

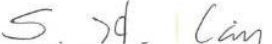
is appointed
HGS Authorized Service Partner in Singapore

Two stroke (MAN, WinGD), Four stroke engine, COPT & Thruster, BWTS



Certificate until November 30, 2022

November 23, 2020



Shin-Ho Lim, Managing Director
Engineering Department
HYUNDAI GLOBAL SERVICE



APPROVAL FROM ENGINE MANUFACTURER'S

UE DIESEL ENGINE

This is to certify
BRIGHTSUN MARINE PTE LTD

is appointed as Authorized Repair Agent
of UEC Diesel Engines,
in relation to after-sales work for
the repair & recondition work and/or
the maintenance work of UEC Diesel Engines

This certificate is valid : from 1st Oct 2023 to 30th Sep 2024



Taketoshi Nakatani, General Manager
After-Sales Department

 **J-ENG**
Japan Engine Corporation



APPROVAL FROM ENGINE MANUFACTURER'S



This is to be certified that
BRIGHTSUN MARINE PTE., LTD.

is appointed as our Authorized Repair Agent for Maintenance
and Repairing for all Akasaka 4 Cycle and UEC 2 Cycle
models.

October 7th, 2022

A handwritten signature in black ink, appearing to read 'M. Watase'.

Mamoru Watase,
Director
Quality Assurance Department

Akasaka Diesels Limited



APPROVAL FROM ENGINE MANUFACTURER'S



APPROVAL FROM ENGINE MANUFACTURER'S



CERTIFICATE

This is to certify that

BRIGHTSUN MARINE PTE LTD

is appointed as Authorized Service Partner in Singapore.

The scope of this approval is applicable to:
Controllable Pitch Propellers and Thrusters

Expiry date: October 31, 2024

Certificate number: AS6277-2022

Nakashima Propeller Co., Ltd.

Yuichi Kato
General Manager
November 1, 2022

NAKASHIMA PROPELLER CO., LTD.



APPROVAL FROM ENGINE MANUFACTURER'S

 **NIIKURA KOGYO CO.,LTD.**

CERTIFICATE

This is to certify that
BRIGHTSUN MARINE PTE., LTD.

is appointed as our Authorised Repair Agent for
Maintenance and Repairing for all NiiKura Kogyo Products.



Product Management Department

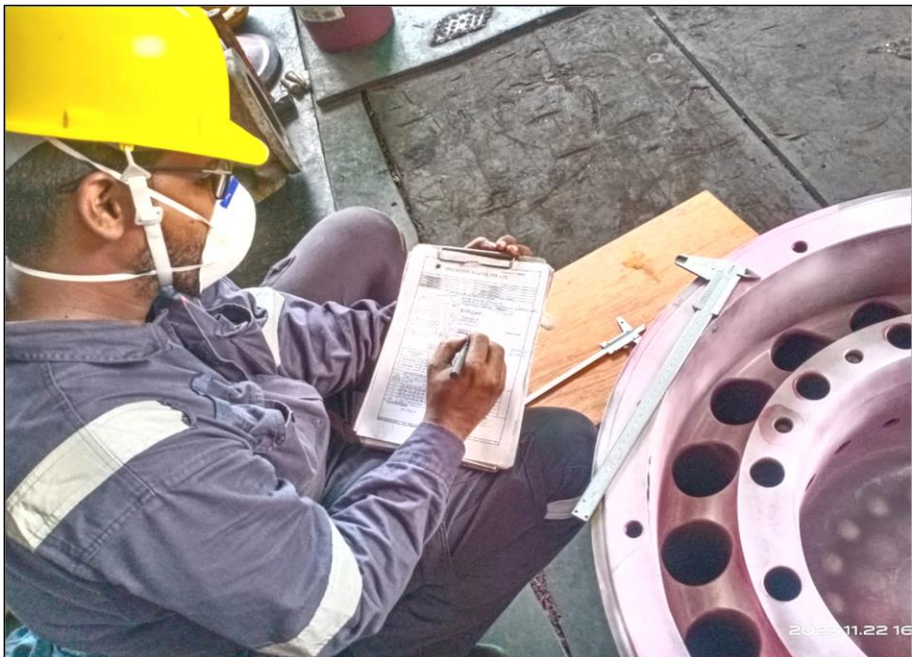

Junya Furukawa / Manager

 **NIIKURA KOGYO CO.,LTD.**

Fuji-Gotenba-factory 2314-6, Jinba, Gotenba-shi
Shizuoka-ken, 412-0047 Japan
Tel: +81-550-78-6220 Fax: +81-550-80-2300



PRE - INSPECTION





PRE MACHINING & WELDING



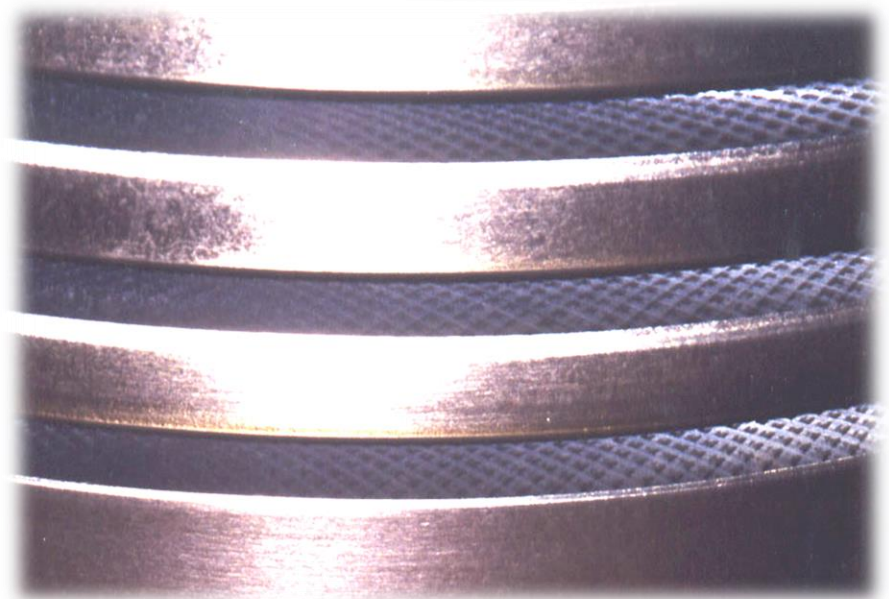
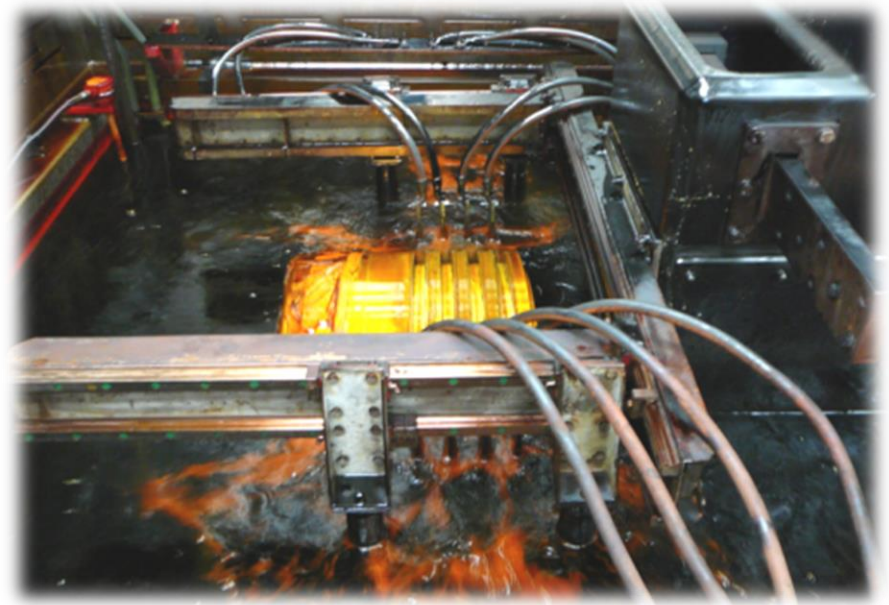


WELDING & FINAL MACHINING





FINAL MACHINING, CHROMING & GRINDING



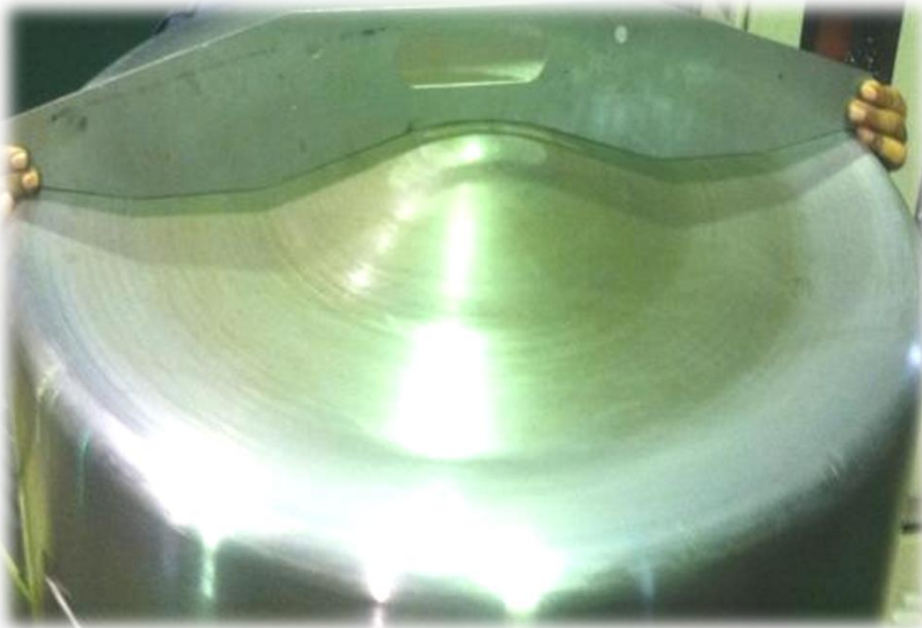


QUALITY CONTROL / QUALITY ASSURANCE

- * All reconditioned components undergo stage wise quality checks including non-destructive testing which are performed by competent personnel.
- * Relevant records are maintained.
- * All reconditioning processes are audited at periodical intervals by competent QC auditors to ensure that all the process requirements are fulfilled.



CALIBRATION





FINAL INSPECTION



BRIGHTSUN MARINE PTE LTD
 No. 9 Tean Ave 9 Singapore 630 738 Tel: 681 8801 Fax: 681 3311 Email: sales@brightsun.com.sg

CUSTOMER: ANDRINO SHIPPING CO. LTD. **COMPONENT:** PISTON CROWN
YARD NAME: JAY PELLA **SUBSTITUTE:** 1 NOS
ORDER TYPE: (New) New work **INSPECTOR:** MS 12 JIM
CUSTOMER REF. NO.: 0123 **DATE OF INSPECTION:** 4 August 2017

INSPECTED BY: MR. SURESH K. S. (UK COMPANY CODE)
MEASURING INSTRUMENT: MITA 300mm DIAL CALIPER, MITA 150mm VERNIER CALIPER, MITA 150mm DEPTH GAUGE, MITA 150mm BORE GAUGE

MEASUREMENTS:
 VOLUME: 800.00
 O.D. MEASUREMENT: 114.00
 MEASUREMENT: 114.00

Work Scope:
 1. Carried out pre-inspection of piston crown.
 2. Carried out pre-machine of all ring grooves and combustion surface.
 3. Carried out pre-heat of piston crown.
 4. Carried out welding on all ring grooves area and combustion surface.
 5. Carried out stress relieving of worked area of piston crown.
 6. Carried out final machining to the standard size.
 7. Carried out machining of ring grooves from standard size to do hard chrome plating.
 8. Carried out recess groove for all ring grooves.
 9. Carried out hard chrome plating of all ring grooves.
 10. Carried out final grinding to the standard size.
 11. Carried out pressure test to 100BAR without leakage.
 12. Carried out final inspection report to the standard size.

EXISTING STAMPING MARKS:
 SRI 65
 4805
 2 287.2
 1762/1
 2134.50
 2 287.2

INSPECTION DETAILS:

Pre-weld check	YES	NO 2 PAIR 8 FINISH
Ring groove condition	NOISEY CORNER	
Combustion surface	CRACKS (CRACK SIZE)	21.50MM X 0.50MM
Bevel on the top of crown	NO	
Leaking area on bottom	NO	NO DAMAGE CORNER
1. RING GROOVE	CRACKS	CRACK SIZE
2. PISTON CROWN SURFACE	CRACKS	CRACK SIZE
3. PISTON CROWN 4	CRACKS	CRACK SIZE
4. CHROME CONDITION	PLATE OFF	CRACK FOUND
5. Piston and contact surface	CRACKS	

MEASUREMENT POINTS:

MEASUREMENT POINT	D1	D2	D3	D4	D5	H1	H2	H3	H4	H5	H6	H7
STANDARD	114.00	114.00	114.00	114.00	114.00	114.00	114.00	114.00	114.00	114.00	114.00	114.00
ACTUAL	114.00	114.00	114.00	114.00	114.00	114.00	114.00	114.00	114.00	114.00	114.00	114.00

REMARKS:
 1. Found slight stain & minor trace at combustion surface.
 2. Found deep crack, CRACK CRACKS off & work off at all ring groove.
 3. Found rubbing marks all round at piston crown OD.
 4. Found some stain at ring groove depth.
 5. Found some stain at ring depth and width.
 6. Depth of all ring groove is 2.15 from original depth 0.50 as per marking.

BRIGHTSUN MARINE PTE LTD
 No. 9 Tean Ave 9 Singapore 630 738 Tel: 681 8801 Fax: 681 3311 Email: sales@brightsun.com.sg

VEHICLE NAME: MV M.M.S **QUANTITY:** 1 NOS
ENGINE TYPE: MAN B&W C **INSPECTION NO.:** ED12207
CUSTOMER REF. NO.: 101727312014 **DATE OF INSPECTION:** 04 July 2017

INSPECTED BY: MR. SURESH K. S. (UK COMPANY CODE)
MEASURING INSTRUMENT: MITA 300mm DIAL CALIPER, MITA 150mm VERNIER CALIPER, MITA 150mm DEPTH GAUGE, MITA 150mm BORE GAUGE

Work Scope:
 1. Carried out pre-inspection of piston crown.
 2. Carried out pre-machine of all ring grooves and combustion surface.
 3. Carried out pre-heat of piston crown.
 4. Carried out welding on all ring grooves area and combustion surface.
 5. Carried out stress relieving of worked area of piston crown.
 6. Carried out final machining to the standard size.
 7. Carried out machining of ring grooves from standard size to do hard chrome plating.
 8. Carried out recess groove for all ring grooves.
 9. Carried out hard chrome plating of all ring grooves.
 10. Carried out final grinding to the standard size.
 11. Carried out pressure test to 100BAR without leakage.
 12. Carried out final inspection report to the standard size.

EXISTING STAMPING MARKS:
 SRI 65
 4805
 2 287.2
 1762/1
 2134.50
 2 287.2

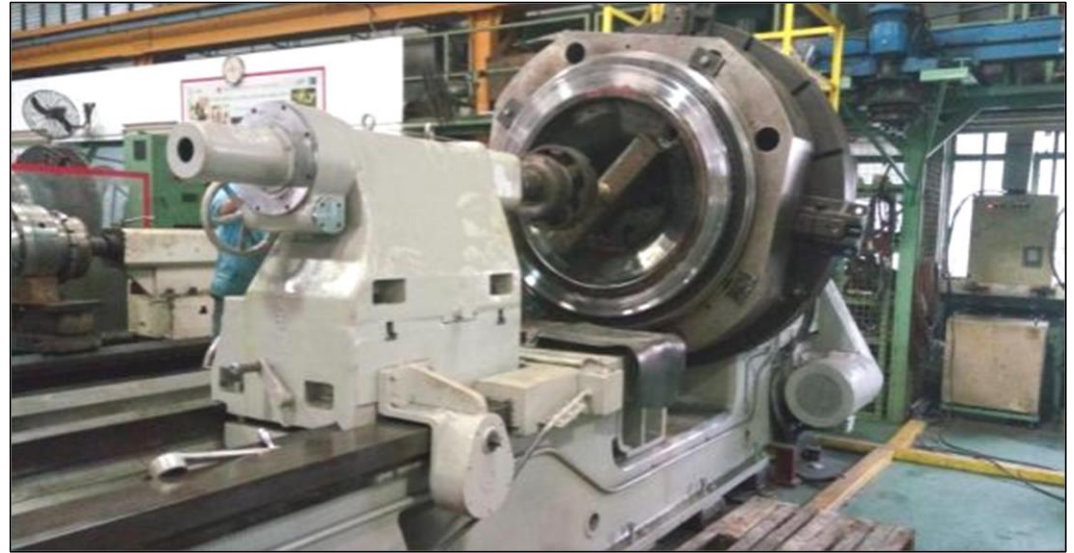
MEASUREMENT POINTS:

MEASUREMENT POINT	D1	D2	D3	D4	D5	H1	H2	H3	H4	H5	H6
STANDARD	114.00	114.00	114.00	114.00	114.00	114.00	114.00	114.00	114.00	114.00	114.00
ACTUAL	114.00	114.00	114.00	114.00	114.00	114.00	114.00	114.00	114.00	114.00	114.00

REMARKS:
 1. Found slight stain & minor trace at combustion surface.
 2. Found deep crack, CRACK CRACKS off & work off at all ring groove.
 3. Found rubbing marks all round at piston crown OD.
 4. Found some stain at ring groove depth.
 5. Found some stain at ring depth and width.
 6. Depth of all ring groove is 2.15 from original depth 0.50 as per marking.



CYLINDER COVER & PISTON ROD RECONDITIONING





M/E COMPONENTS O/H/AULING



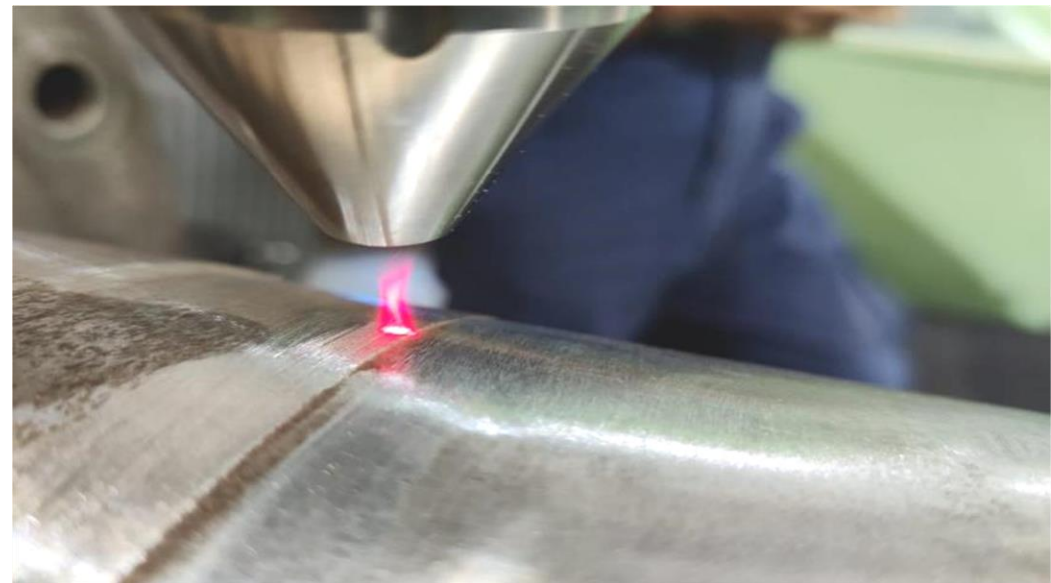
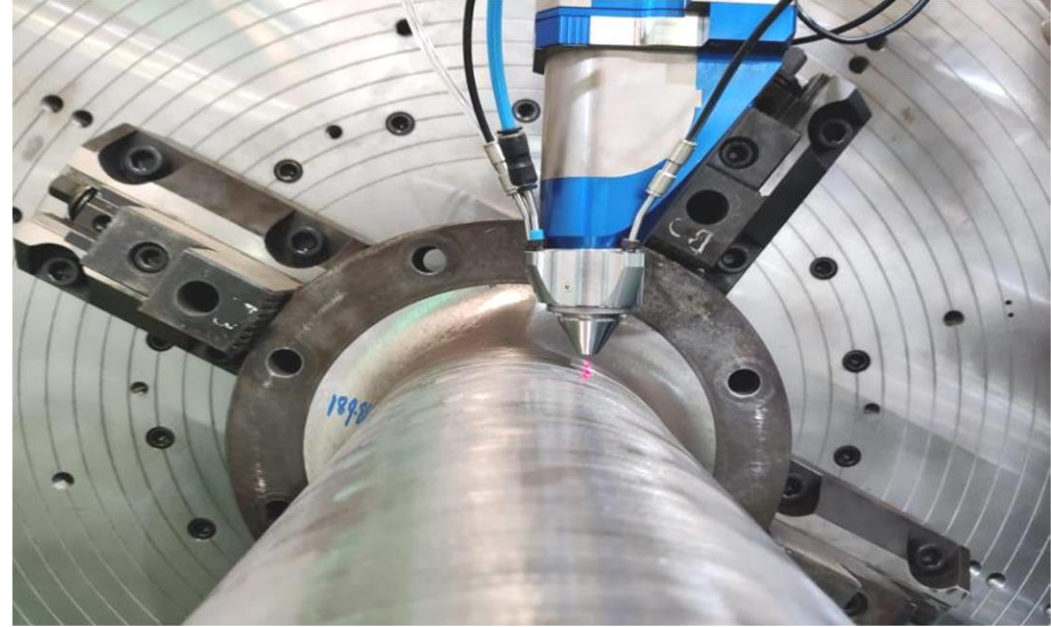


ROBOTIC LASER CLADDING

- * State of the art additive technology to replace chrome plating on piston ring grooves
- * Reconditioning of exhaust valve spindle lid and seat
- * Reconditioning of Piston rods and rotating equipment
- * Reconditioning of cam shaft, turbo rotors, generator rotors, cross head and gear shaft
- * Reconditioning of rotating machinery shafts made from carbon steel, high tensile steel, cast steel, stainless steel and various ferrous alloy material



ROBOTIC LASER CLADDING





COUNTRIES / AGENTS



GERMANY

* VISURGIS MARINE SERVICE



GREECE

* TOOL BOX MARINE REPAIRS ALLIANCE LTD



TURKEY

* GLOBAL MARINE SERVICE



CYPRUS

* EPSCO LTD



UAE

* PETRONEFT MARINE SERVICES L.L.C



BAHRAIN

* PETRONEFT MARINE SERVICES L.L.C



OMAN

* PETRONEFT MARINE SERVICES L.L.C



UNITED KINGDOM

* CALVEY MARINE LIMITED



IRELAND

* CALVEY MARINE LIMITED



CHINA

* SAJEE MACHINERY CO LTD



NETHERLANDS

* AYS SHIP REPAIR B.V



BELGIUM

* AYS SHIP REPAIR B.V



SOUTH KOREA

* OCEANSCOPE LIMITED



JAPAN



MECHANICAL REPAIRS

* **Pumps**

Remove, overhaul, repair & refitting all types of pumps.

* **Propeller**

Repair & overhaul CPP Propeller, Fixed pitch propeller, calibration, blue fit, coarse & super polishing as well as alignment.

* **Thruster**

Remove, standard overhauling, backlash setting, thrust setting and refit

* **Gear Box**

Remove/ Refit, Calibration, Spares Renewal and alignment

* **Deck Machinery & Hydraulic Winches**

Remove, overhaul, repair of Deck machineries, and refit

* **Heavy Lifting**

Scope includes engine, Heavy machines Removal / Re install c/w Alignment & Chock Fast.



PROPULSION SYSTEM

We carry out service and provide technical support at **Shipyard's** for Worlds Leading Brand Propulsion system manufactured by.....

- * Nakashima
- * Niigata
- * Rolls Royce
- * Wartsila
- * Kawasaki
- * Lips
- * Komome
- * Kamewa
- * Berg
- * DCNS
- * Brunvoll
- * Schottel
- * CAT
- * HRP
- * Hamilton
- * Voith Schneider Propeller



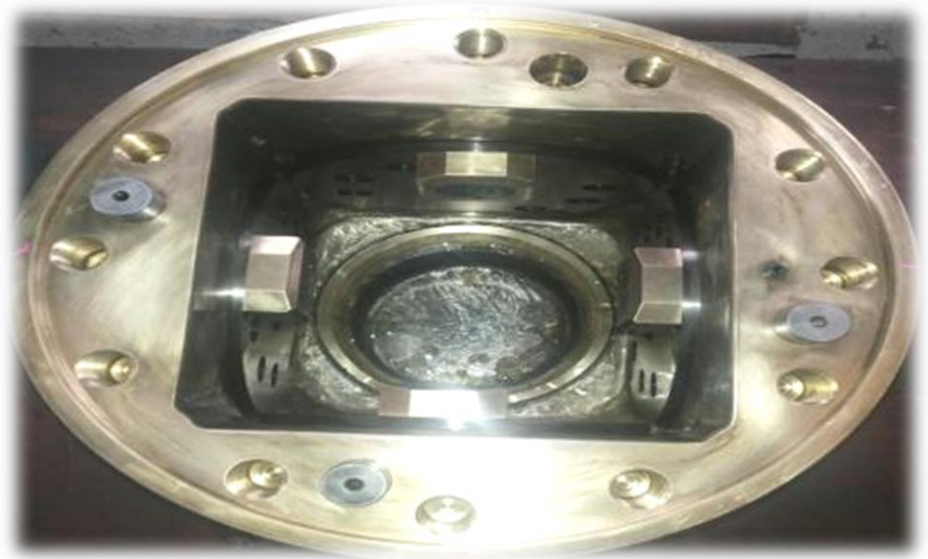
SPECIALIZED UNDER WATER JOBS

We have a specialized team to carry out servicing, troubleshooting and diagnostics of shaft line systems at Shipyard's like.....

- * FPP (Fixed Pitch Propeller)
- * CPP (Controllable Pitch Propeller)
- * Different Types Of Thrusters
 - * Bow Thruster / Stern Thruster / HRP Thruster
 - * 360° Rotatable / Swing Thruster
- * Water Jet System
- * VSP Unit (Voith Schneider Propeller)
- * Rudder System
- * Stabilizer System
- * Steering System
- * Inboard/ Outboard Seal Units
- * All Types Of Couplings



SERVICING OF CPP PROPELLER SHAFT





STERN TUBE SEAL UNITS

We have a specialized team for servicing ,troubleshooting and diagnostics of Inboard & Outboard Seal system and Shaft Couplings like....

- * EVK Seal , Lip Seal ,Cederwall Seal,Deep Sea Seal
- * Shaft Mechanical Seal

COUPLINGS

- * Key Way & Keyless Couplings



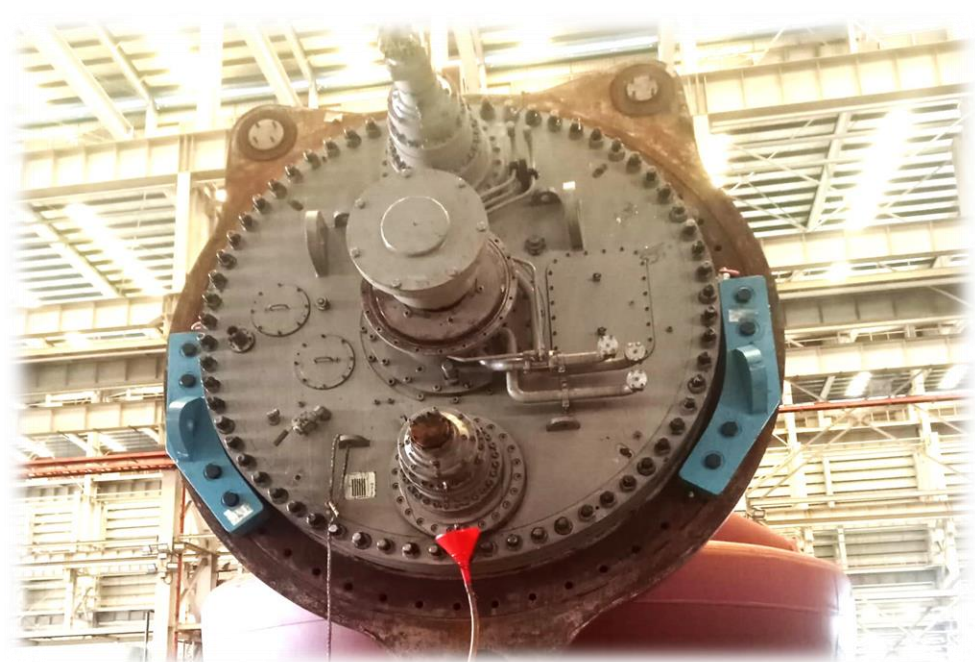


CPP OVERHAULING & ON-BOARD INSTALLATION





THRUSTER OVERHAULING





HRP THRUSTER WITH GEAR BOX O/HAULING



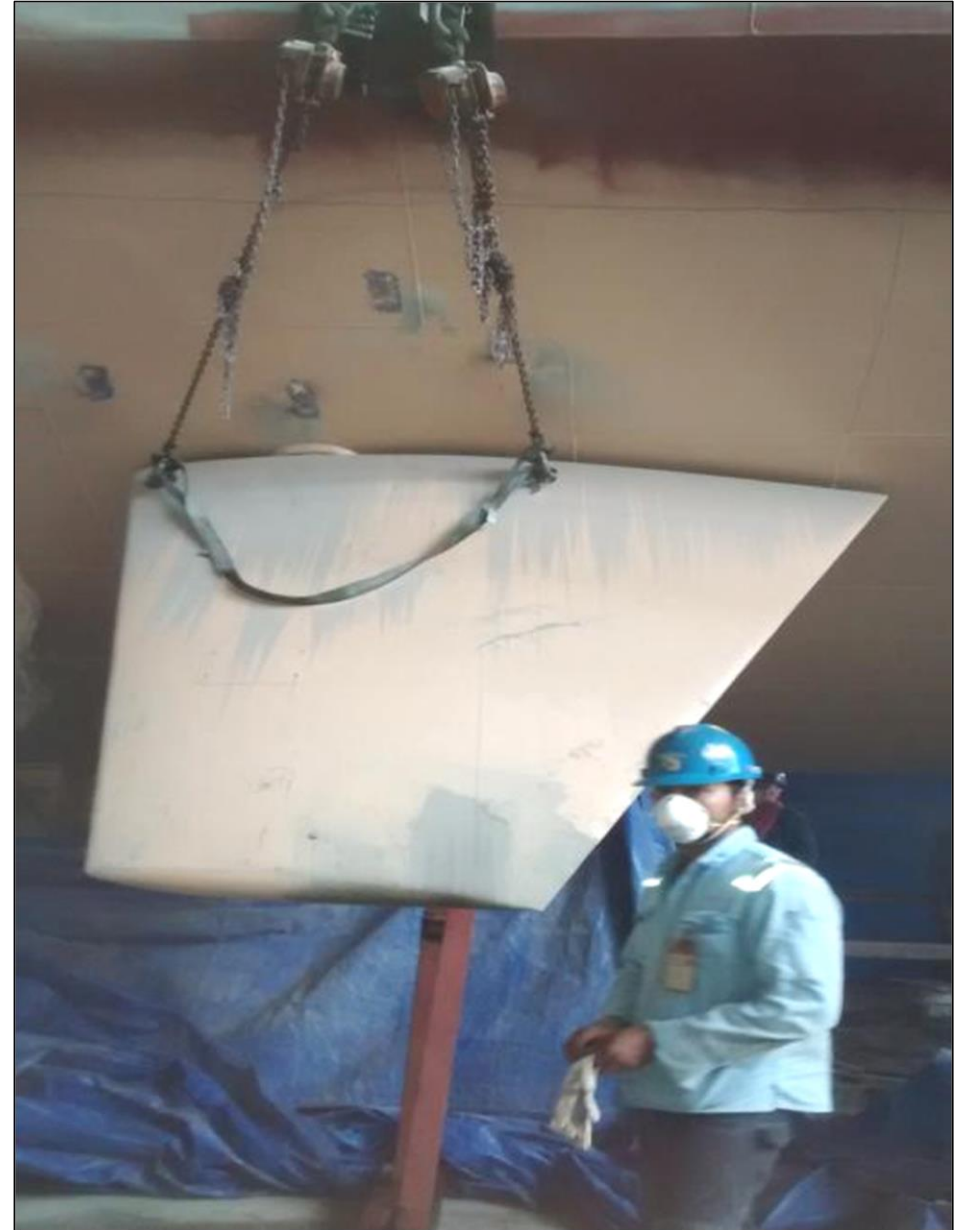


HEAVY LIFTING & RIGGING



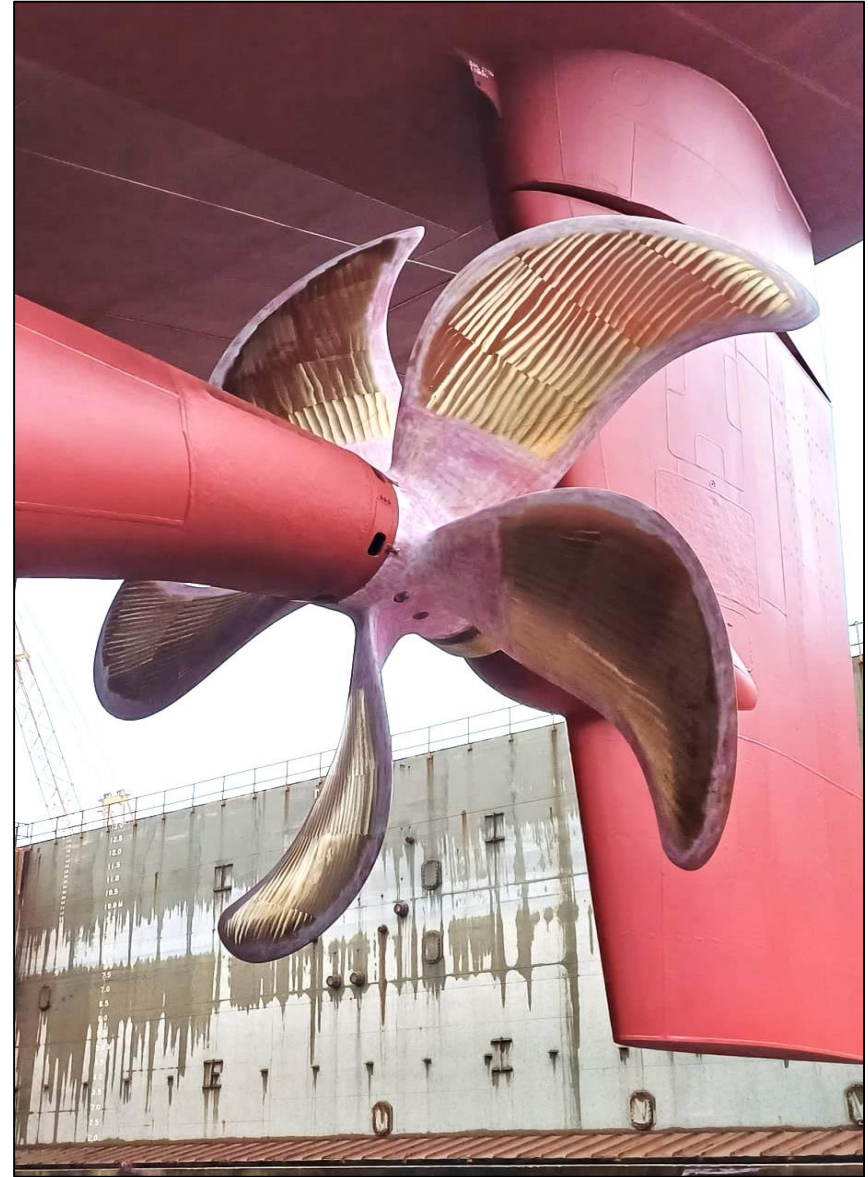


INSTALLATION OF RUDDER & STABILIZER





POLISHING OF PROPELLER





OVERHAULING OF DECK MACHINERY





OVERHAULING OF HYDRAULIC & PNEUMATIC SYSTEM





OVERHAULING OF POWER TRANSMISSION SYSTEM





OVERHAULING OF VARIOUS APPLICATION PUMPS





A/E OVERHAULING , LASER ALIGNMENT & INSPECTION





MACHINING WORKS





ELECTRICAL REPAIRS

* **Motors & Generators**

Motor Overhauling Performing AC & DC Control, Rewinding all types of motors and transformers, dynamic balancing, synchronizing AVR Control Auto Start and Load sharing

* **Preventive Equipment**

HV & LV Switch Gear, Air Circuit Breaker, Miniature Circuit Breaker, Moulded case Circuit Breaker, Motor's Overload Relays, Starters and Control Panels

* **Gauge and Meter Calibration**

All types of Gauges, Meter, Monitors, and Indicators, Primary & Secondary Current Injection test for all type of Breakers up to 2500A and over current preference Trip. Reverse Power Trip Under Voltage Trip, Panel Meters

* **Installation & Commissioning**

HV & LV Generators, Motors & Cables, Switch Gears, Distribution system, Starters and Motor Control Variable Speed Drive



INSTRUMENTATION SERVICE

We carry out service and provide technical support at **Shipyard's** for Worlds Leading Brand of E&I components manufactured by.....

- * ABB
- * CATERPILLAR
- * WARTSILA
- * HYUNDAI
- * STAMFORD
- * SIEMENS
- * GE
- * TERASAKI
- * SCHNEIDER
- * MITSUBISHI

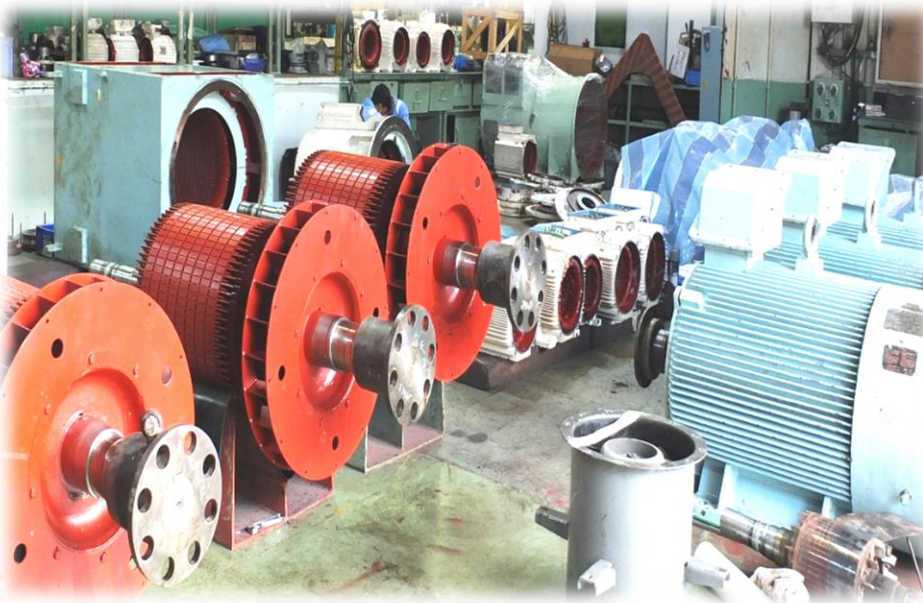


MOTOR OVERHAULING & DYNAMIC BALANCING





REWINDING & TESTING





E&I CONTROL

Calibration and Testing of...

- * Process instruments, pressure gauges, transmitter controllers, receivers and process loop parameters, pressure switches, level switches temperature switches, pneumatics and hydraulics controls and valves
- * Monitoring and Alarm Systems
- * Repairing, troubleshooting and new installation and commissioning of bridge, engine control Monitoring system, main/aux. engine alarm system, reefer and cargo hold monitoring system, oil discharge monitoring system, general alarm, bilge alarm and fire monitoring system
- * Monitoring and Control System
- * Oily water separator, cargo fuel oil tank level, pressure and temperature controls, gas detecting system inert gas system, incinerator, fixed oxygen analyzer, ballast tank level gauge, draft gauge, ballast heeling



AUTOMATION SYSTEM





SPECIALIZED SERVICES

- * Laser Alignment
- * Vibration Analysis
- * Infrared Thermograph Analysis
- * PCD Repair & Troubleshooting
- * PLC Design & Modifications
- * Self Injection Kits for LV Services
- * Switch Board / Electrical DB Modification & Design
- * Engine Controls
- * Test Kit For Switch Board Calibration
- * Tank Gauging & Cargo Control Systems



PIPING REPAIRS

- * Piping Spool Fabrication as per the Isometric Drawing
- * Piping Hydro Test & Flushing inclusive of High Pressure and various medium
- * System Commissioning as per Test Protocol
- * All types of Hydraulic and Pneumatic SS & CuNi Tubing Installation inclusive of trouble shooting
- * WPS, PQR & WPQ for CS, SS & CuNi.
- * FRP, CU-NI, SUS, Alloy Pipe Fabrication and Installation
- * Arrangement of Galvanizing, Blasting & Painting



PIPING RENEWAL





PIPING RENEWAL





STRUCTURAL REPAIRS

- * Steel Structural Fabrication as per Technical drawing
- * Vacuum, Hydro & Pressure Testing of Structures
- * WPS, PQR & WPQ for MS, SS, HT Steel & Aluminium
- * Cropping & Renewal of Steel Structures in Afloat Condition at Wharf & Anchorage
- * Arrangement of Scaffolding, NDT Inspection etc.
- * Fabrication & Installation of Outfitting Structures
- * Fabrication of FPSO Skid's & E House
- * Open Yard of 10000 Sq Ft with 30 Ton Gantry Crane



STEEL STRUCTURAL FABRICATION





STEEL STRUCTURAL FABRICATION





STEEL STRUCTURAL FABRICATION



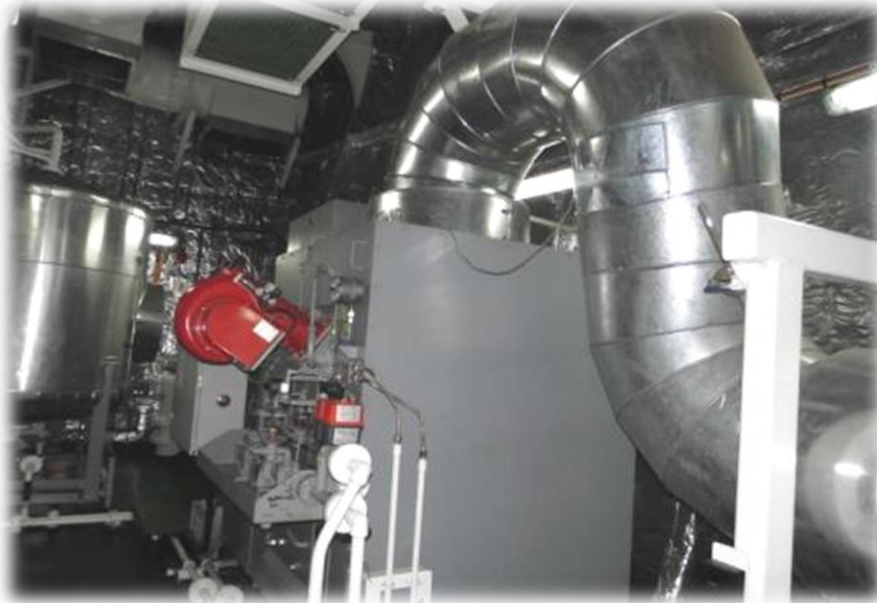


INSULATION AND CLADDING SERVICES

- * Heat Insulation
- * Cold Insulation
- * Sound Barrier Insulation
- * In-Situ Polyurethane foam filling
- * Pre fabricated insulation
- * Marine duct wrap insulation.



INSULATION & CLADDING





CONTACTS

R. Guna
Managing Director

Mobile : +65 9237 2289
Email : guna@brightsun.com.sg
Phone : +65 6861 0091 (DID)

R. Anand
Director – Marketing & Sales

Mobile : +65 8189 5059
Email : anand@brightsun.com.sg
Phone : +65 6863 2575 (DID)

Sakai Yukinori
Vice President – Technical / Sales

Mobile : 080 4496-1731 (JP)
Mobile : +65 9061 1853 (SG)
Email : sakai@brightsun.com.sg

Menno De Vries
Vice President – Business Development

Mobile : +31 621827023
Email : menno.e.g@brightsun.com.sg
Phone : +31 384773007 (Office)

Business Enquiries:

K. Madhu Kumar
Director – E&I

Mobile : +65 9151 6464
Email : madhu@brightsun.com.sg
Phone : +65 6255 6069 (DID)

N. Chandru
General Manager – Operations

Mobile : +65 9129 1771
Email : chandru@brightsun.com.sg
Phone : +65 6265 9300 (DID)

N. Devan
General Manager – Operations

Mobile : +65 9126 7667
Email : devan@brightsun.com.sg

Sales Enquiries:

sales@brightsun.com.sg
engine@brightsun.com.sg
commercial@brightsun.com.sg

Web:

www.brightsun.com.sg

Workshop & Office :

No 9, Tuas Avenue 8, Singapore 639 224
Phone : +65 6863 4001
Fax : +65 6863 3521





धन्यवाद

TERIMA KASIH

谢谢

நன்றி

ありがとう